

SITE AREA:

SHOPPING CENTER 2.50 ACRES

BUILDING AREA:

SHOPS

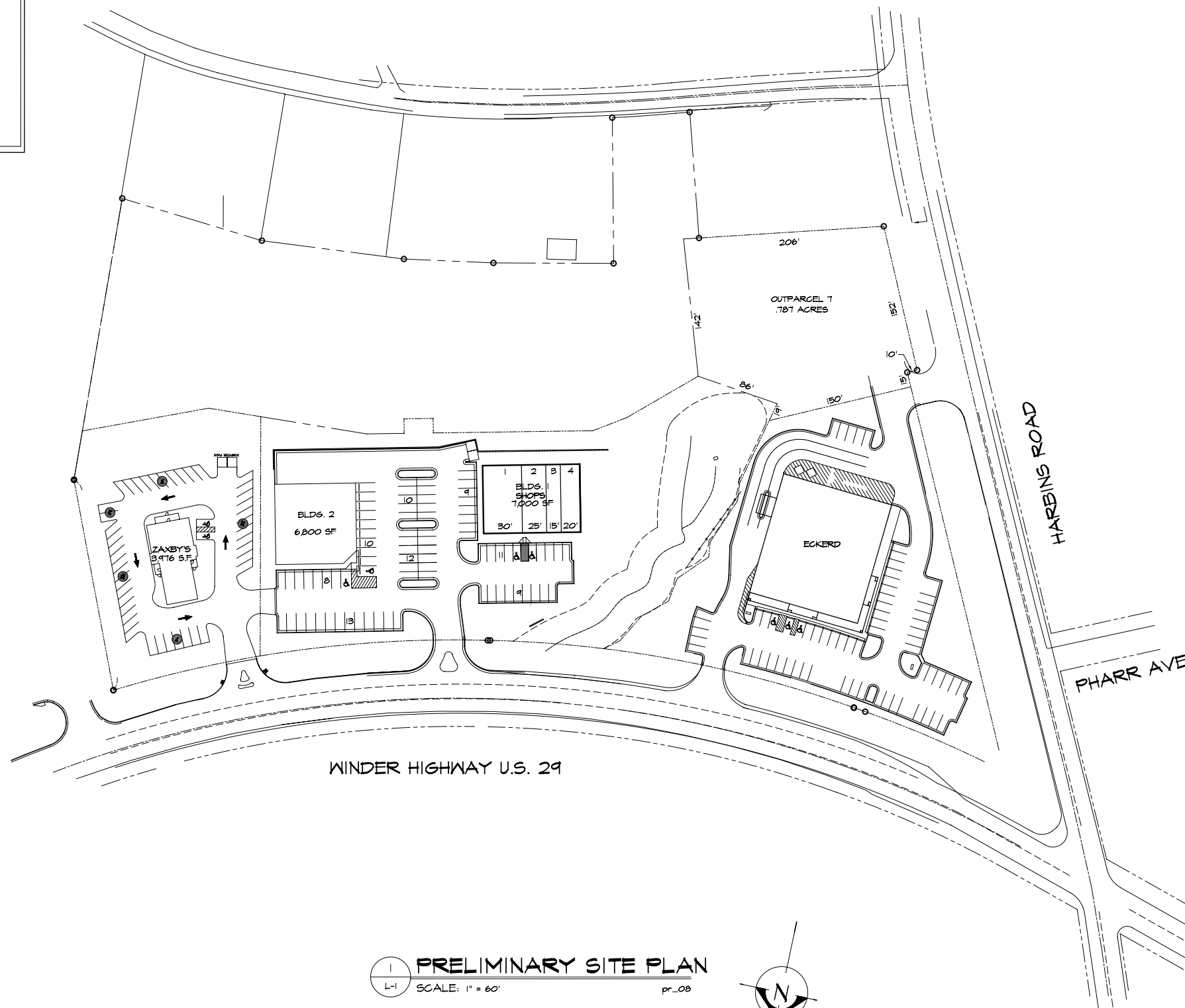
BUILDING 1 7,000 S.F.
BUILDING 2 6,200 S.F.

TOTAL 13,200 S.F.

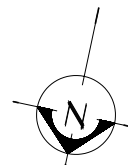
PARKING DATA:

ASSUMES 2,600 S.F. OF RESTAURANT SPACE

PARKING PROVIDED 82 SPACES
PARKING REQUIRED 82 SPACES
PARKING RATIO 5.94/MSF



1 PRELIMINARY SITE PLAN
L-1 SCALE: 1" = 60' pr_08



2550 Northwinds Parkway
Suite 140
Alpharetta, Georgia 30004
Phone: 770.753.8787
Fax: 770.753.0285
www.hiscuttassociates.com

THESE DOCUMENTS ARE INSTRUMENTS OF SERVICE FOR USE SOLELY WITH RESPECT TO THIS PROJECT AND ARE NOT TO BE REPRODUCED OR USED FOR THE CONSTRUCTION OF ANOTHER PROJECT WITHOUT SPECIFIC AUTHORIZATION. COPYRIGHT 2003 HISCUTT & ASSOCIATES, INC.

PROJECT:
TOWLER VILLAGE
WINDER HIGHWAY - U.S. 29 at HARBINS ROAD
Dacula, Georgia
FOR:
WATKINS ASSOCIATED DEVELOPERS
Atlanta, Georgia

SHEET TITLE:
PRELIMINARY
SITE PLAN

ISSUE DATE:	01.05.05
PROJECT NO:	03-146
FILE NAME:	L-1 01.05.05
DRAWN BY:	PJH
SHEET	OF

PROJECT NO: 03-146
FILE NAME: L-1 01.05.05
DRAWN BY: PJH

SHEET 1 OF 1

L-1