



SITE SERVICES
OUTPARCEL PROPERTIES GROUP

OUTPARCELS FOR SALE

SOUTH FULTON PARKWAY AND HWY 92 | FAIRBURN, GEORGIA
FULTON COUNTY



PROJECT HIGHLIGHTS

- Located at Parkway Village Shopping Center, anchored by Publix Supermarkets.
- Six outparcels available ranging from 1.0 to 1.65 acres, as well as a 16.30 acre tract perfect for a big box retailer.
- Intersection of South Fulton Parkway and Campbellton-Fairburn Road (Hwy 92).
- Wachovia Bank, McDonald's and Zaxby's are currently open and operating in the Parkway Village Shopping Center. Walgreen's has acquired an outparcel as well, with plans for construction to begin in the near future.
- Located in the South Fulton Submarket, an area that, over the past few years, has experienced rapid growth, including a boom in residential homes and new schools.
- Hall Road, which intersects with Highway 92 directly in front of the Subject Property, is the primary access road serving three new county schools (Elementary, Middle and High School).
- South Fulton County is home to Hartsfield-Jackson International Airport, as well headquarters for such notable corporations as Chick-fil-A and Delta Airlines.

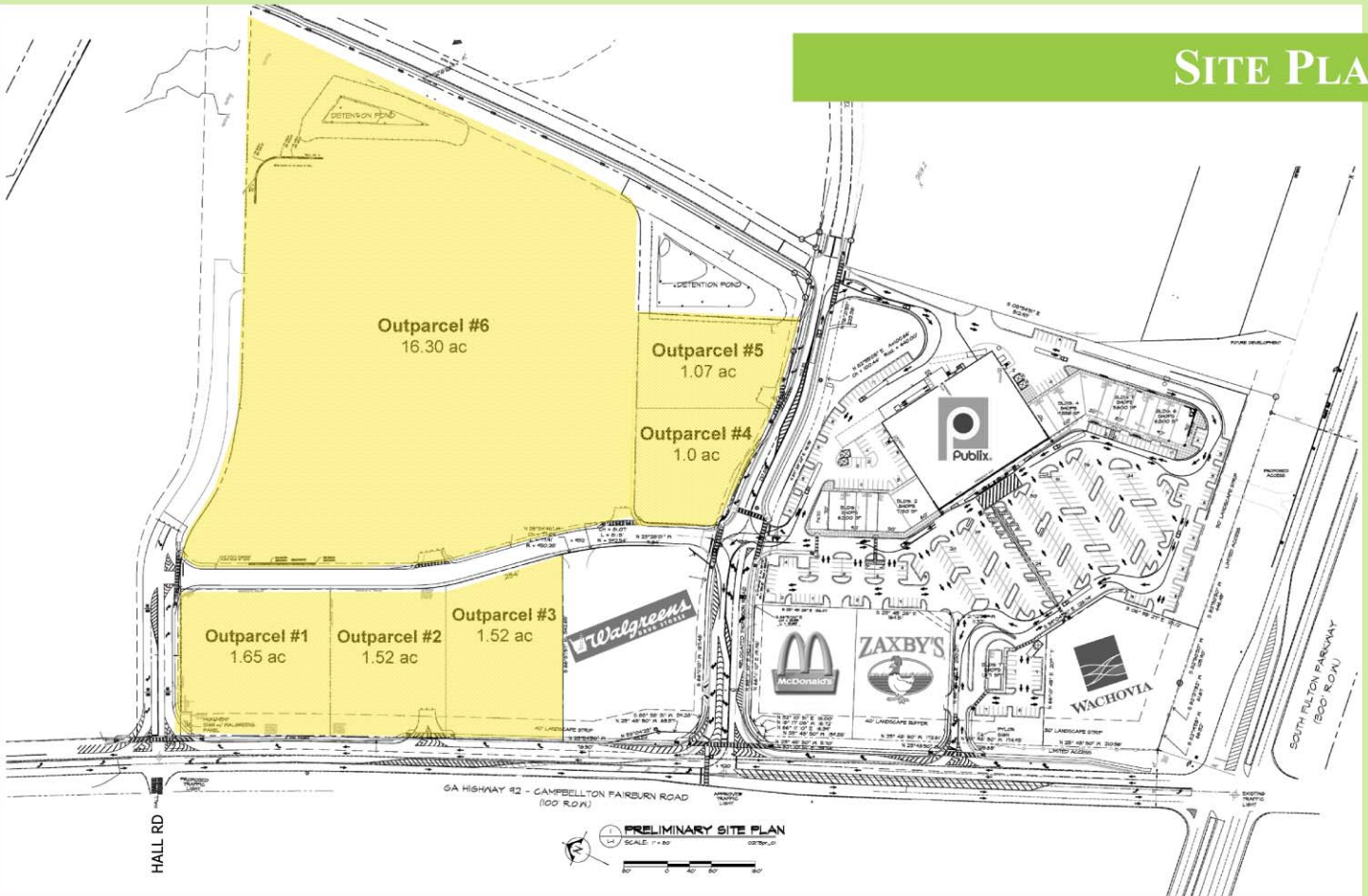
DEMOGRAPHIC PROFILE

South Fulton Parkway and Hwy 92, Fairburn, GA			
	1 mi	3 mi	5 mi
2009 Population	987	15,962	46,114
2014 Population Projection	1,289	20,559	58,363
Growth 2000 - 2009	529%	182%	132%
Growth 2009 - 2014	31%	29%	27%
2009 Average Household Income	\$78,772	\$70,101	\$69,784
2009 Median Household Income	\$68,552	\$63,865	\$62,999

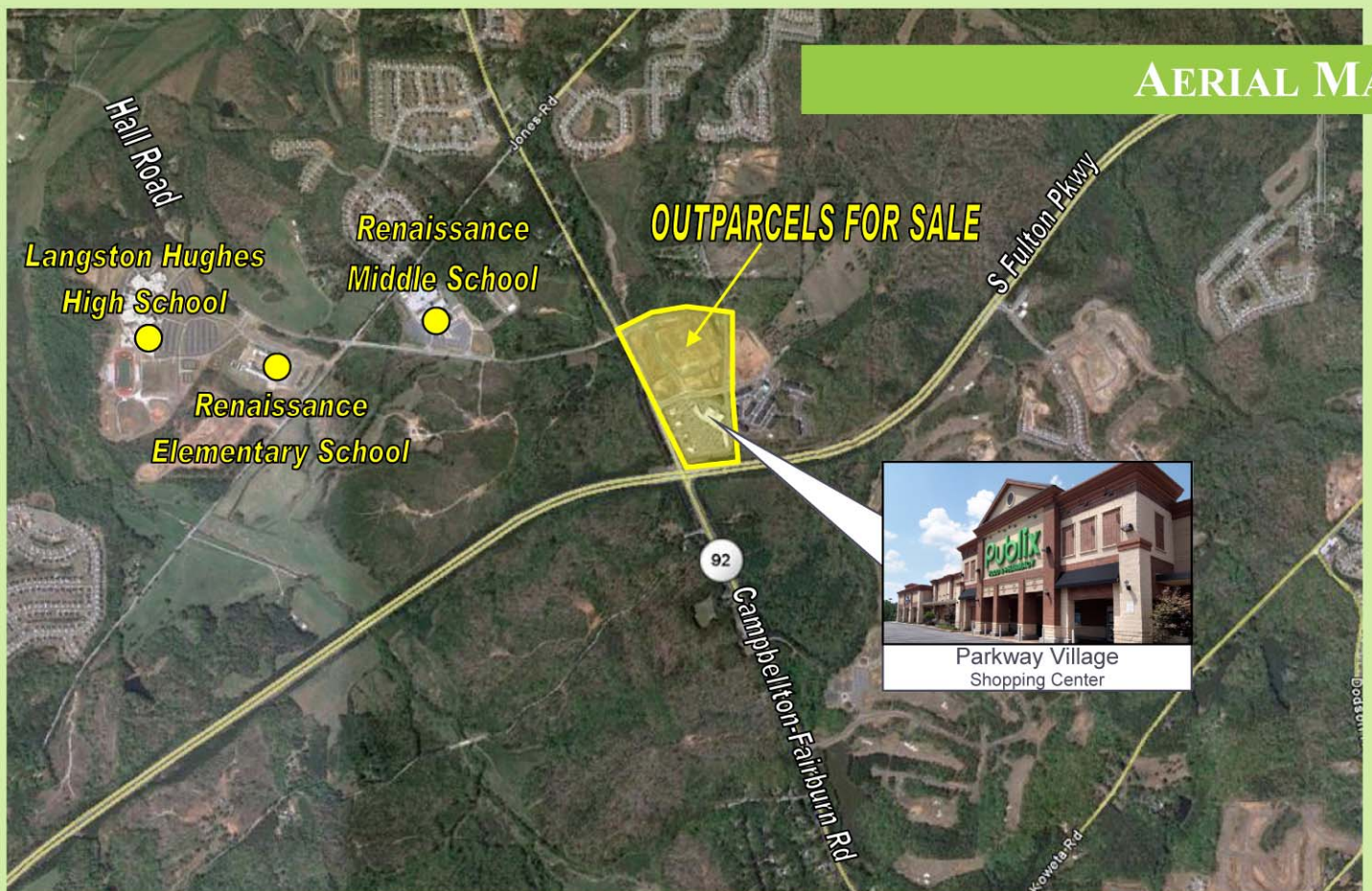
TRAFFIC COUNTS

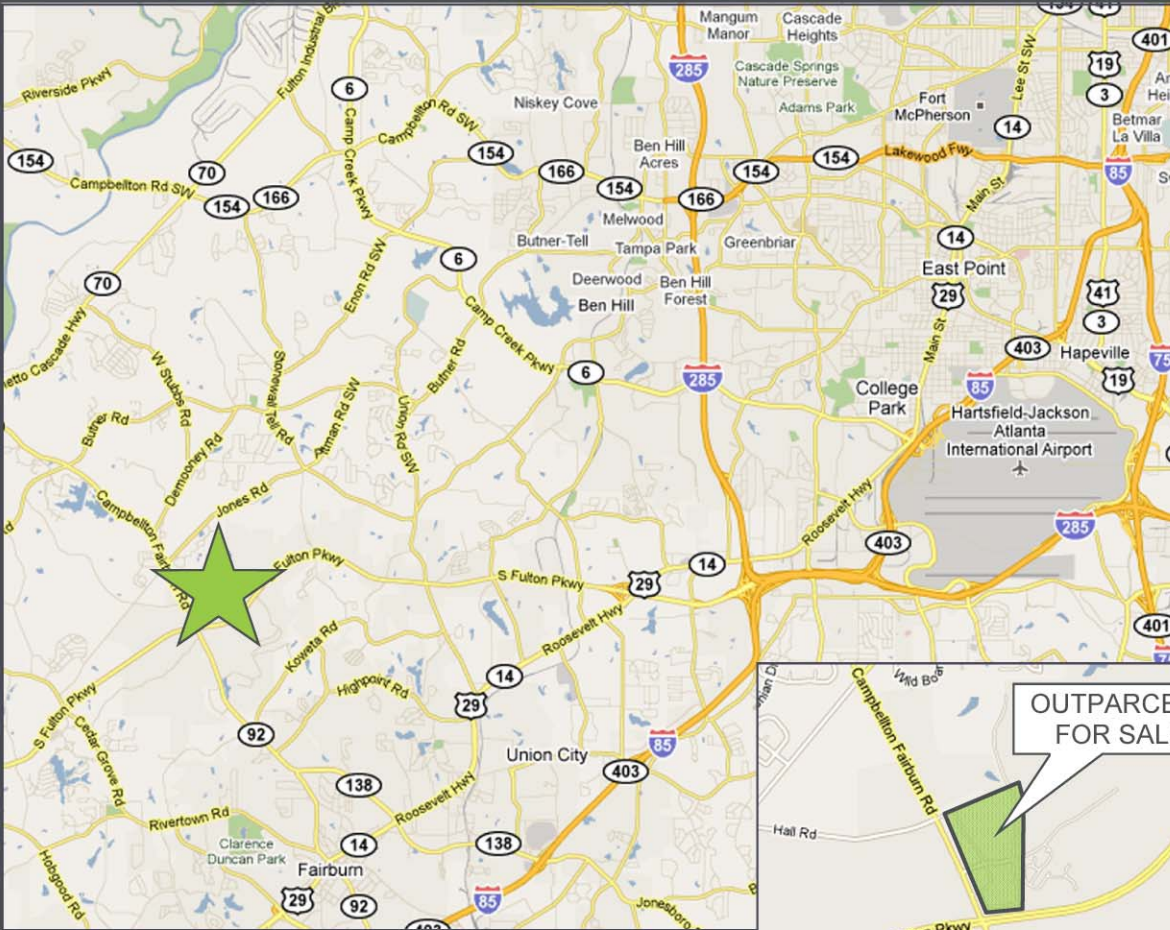
2009 AADT Source: GA DOT	
Campbellton-Fairburn Rd (North of S. Fulton Pkwy)	28,490 cars pass daily
Campbellton-Fairburn Rd (South of S. Fulton Pkwy)	27,760 cars pass daily
S. Fulton Parkway (East of Hwy 92)	9,730 cars pass daily
S. Fulton Parkway (West of Hwy 92)	9,200 cars pass daily

SITE PLAN



AERIAL MAP





**FOR MORE INFORMATION ON THE PARKWAY VILLAGE OUTPARCELS
PLEASE CONTACT:**

DAN GOERKE

Managing Director - Outparcel Properties Group

Site Services Group, LLC

1946 Monroe Drive NE

Atlanta, GA 30324

Direct: (404) 920.8698

Main: (678) 750.1050

Fax: (404) 601.4651

Email: dan@siteservicesgroup.com



SITE SERVICES

OUTPARCEL PROPERTIES GROUP

www.siteservicesgroup.com