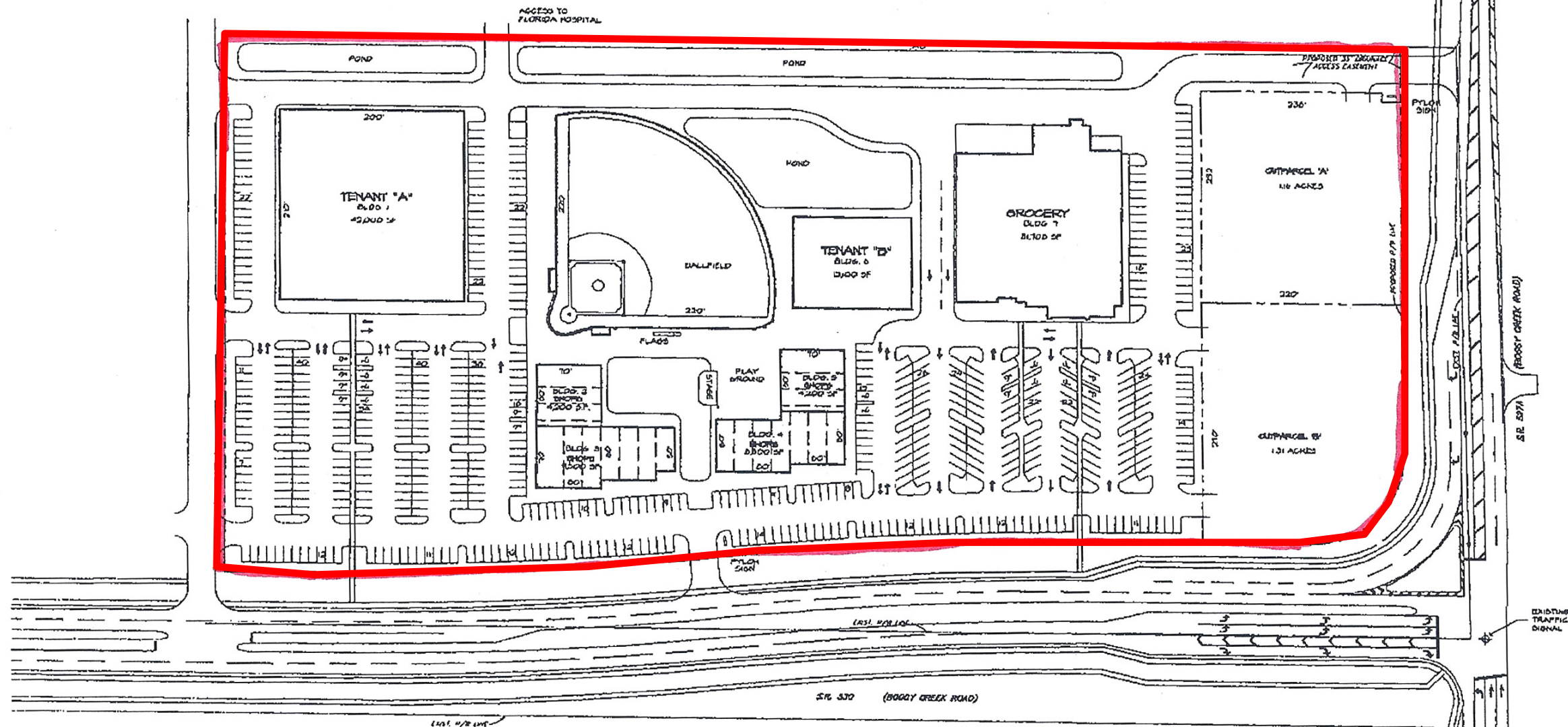


| SITE AREA: | |
|-----------------|-------------|
| SHOPPING CENTER | 13.61 ACRES |
| OUTPARCEL 'A' | 1.31 ACRES |
| OUTPARCEL 'B' | 1.16 ACRES |
| TOTAL | 16.08 ACRES |

| BUILDING AREA: | |
|----------------|--------------|
| GROCERY | 31,708 S.F. |
| TENANT 'A' | 42,000 S.F. |
| TENANT 'B' | 18,100 S.F. |
| NEW SHOPS | 26,400 S.F. |
| BUILDING 2 | 4,200 S.F. |
| BUILDING 3 | 9,500 S.F. |
| BUILDING 4 | 8,500 S.F. |
| BUILDING 5 | 4,200 S.F. |
| TOTAL | 113,208 S.F. |

| PARKING DATA: | |
|------------------|------------|
| PARKING PROVIDED | 579 SPACES |
| PARKING RATIO | 5.12/MSF |



PRELIMINARY SITE PLAN
 SCALE: 1" = 60'
 00104_12

HA
 Hiscott
 Associates
 ARCHITECTURE
 3655 Bronckdale Parkway
 Suite 317
 Alpharetta, Georgia 30022
 Phone: 770.753.6787
 Fax: 770.753.0285
 Web: www.hiscott-ha.com

PROJECT:
BOGGY CREEK CROSSINGS
 Boggy Creek Road
 Orlando, Florida
 FOR
 WATKINS RETAIL GROUP, INC.
 Atlanta, Georgia

SHEET TITLE:
 PRELIMINARY
 SITE PLAN

ISSUE DATE:
 03/06/10
 PROJECT NO. 06-184
 FILE NAME: L11004.01
 DRAWN BY: PJH

SHEET 1 OF 1
L-1